

# Michelangelo OFFICE CX

## DESCRIPTION

Michelangelo OFFICE Cx is an **ADSL2/2+ Router** with a built-in 4 ports switch 10/100 Mbps ideal for SOHO (Small Office Home Office) applications over the ADSL line.

It supports the most popular **ADSL2/2+ and ADSL protocols** and has got routing features to carry out and configure your LAN in the best way.

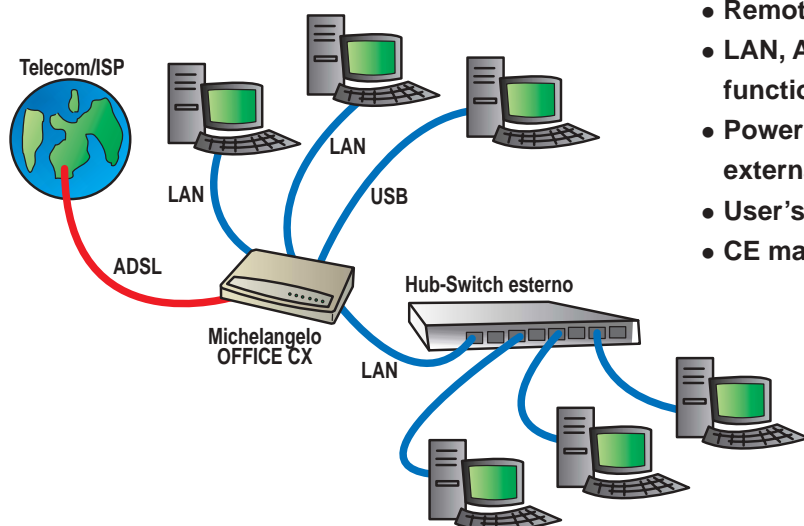
Thanks to the Web based configuration, Michelangelo OFFICE Cx can be simply and quickly configured from Windows®, Macintosh®, Linux, etc., using a common browser (Explorer, Netscape, etc.)

You don't need to connect several times at a day to send and receive the e-mails as your Internet connection will be always on and the telephone line always free for faxes and calls, etc.

Using Michelangelo OFFICE Cx you will exploit all the advantages of the ADSL connection and you will be able to download images, videos and mpeg files in few seconds.

It has an USB port for the direct connection of a Windows® PC.

The built-in Stateful Packet Inspection Firewall protects your LAN from Internet attacks and intrusions.



Code: 8E4225

- Asymmetric data speed
- Downstream max.speed: 24Mbps (ADSL2+), 8Mbps (dmt)
- Upstream max.speed: 8Mbps (ADSL2+), 1Mbps (dmt)
- ADSL Standard: ADSL2+, ADSL2, DELT, READSL2, ADSL Full-rate ANSI T1.413 Issue 2, G.dmt, G.lite, G.hs
- Supported protocols: RFC2364 (PPPoA), RFC2516 (PPPoE), RFC1483 (Bridged and Routed Ethernet over ATM)
- ATM UNI3.1/4.0 PVC, ATMSAR, ATM AAL5 and OAM F5 support
- ADSL WAN Interface: RJ11 connector
- 10/100Mbps built-in 4 ports switch
- MDI/MDI-X on all ports
- Packet Filtering (block & forward)
- DMZ support and IN & OUT VPN Passthrough
- NAT and NAT Export support
- DHCP server and client
- Static Routing and RIPv2
- PAP and CHAP authentication
- FTP TFTP upgradable
- Web based configuration
- Remote configuration
- LAN, ADSL and ATM Auto-diagnostics functions
- Power supply: 12Vac 1A through external power supply 220Vac
- User's manual
- CE mark

NETWORKING - ADSL2/2+ ROUTER