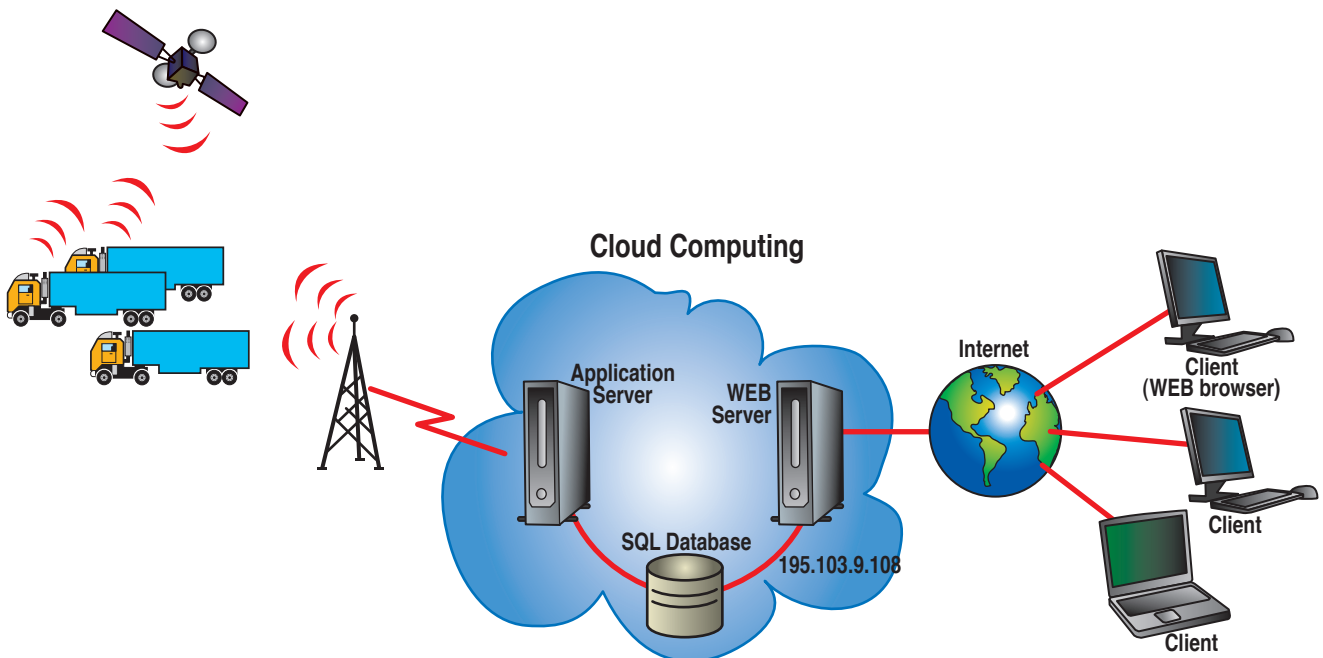
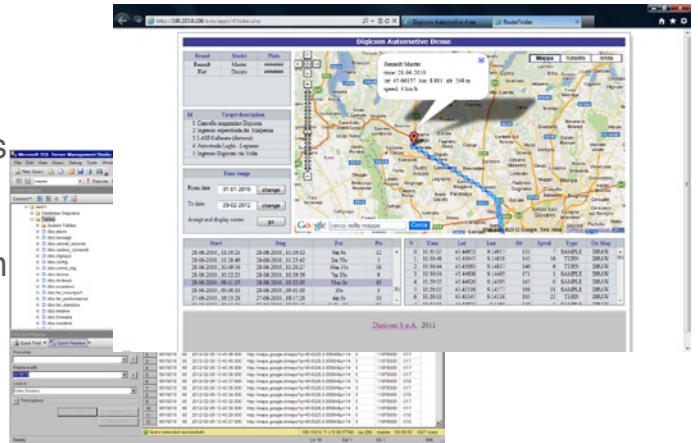


# Automotive *Fleet Management Service*

- **Application server**, developed on JAVA 6, can run on any Linux distribution, tested on Cent OS Ver 5.0
- **Database**, Microsoft SQL Server 2008 R2
- **Operating System**, Linux based (Cent OS Ver. 5.0)
- **Cloud computing ready**, the entire platform can be virtualized with VMWARE, tested with vSphere 4.1
- **FEP GPRS** - Front End Processor interface to interact with vehicle devices based on TCP/IP protocol
- **CBM/SMS** - Bidirectional Communication Back-up module via SMS/CSD
- **RAS** - Remote Access Server for CSD application
- **RADIUS** - Remote Authentication Dial-in User Service module for CSD application
- **FTP** - File Transfer Protocol module for OTA (over the air) firmware upgrade



Digicom fleet management solutions integrate **GPS**, **wireless communication technologies** and the **Internet** to provide **real-time information** about the **location** and **status of vehicles** and **mobile resources**.

Vehicle tracking product family keep customers ahead of competition and one step ahead of emerging new challenges.

This architecture lends itself to the **development of a dedicated Application Server** which listens for incoming TCP/IP connections and process data stream.

This is a fundamental building block of the software architecture; in fact it **decouples the Vehicle Tracking proprietary protocol from the most well-known and widespread standards** for data formatting, thus operating the way to the construction of a complete Service Center.

Vehicle **data collected by the Application Server can be stored in a database** (Microsoft SQL Server) easily accessible by other front office applications and suitable for further integration with topographic information.

