

PALLADIO WAVE USB



User's Guide
rev. 1.0 09/2002

Copyright Statement

No part of this publication may be reproduced, stored in a retrieval system, or transmitted in any form or by any means, whether electronic, mechanical, photocopying, recording or otherwise without the prior writing of the publisher.

Windows[™] 98SE/2000/ME/XP/CE are trademarks of Microsoft[®] Corp.

Pentium is trademark of Intel.

All copyright reserved.

Notes:

The Product is passed CE and able to be used in these countries as following:

North America: US, Canada

Europe: Germany, France, Italy, England, Spain, Austria, Danish, Finland, Iceland, Luxembourg, Netherlands, Norway, Sweden, Switzerland

Asia: Hongkong, Taiwan, Korea, Singapore

Australia, New Zealand



Radio Channel Selection Table

	Regulatory domains				
Channel_ID	U.S.A.	Canada	Most of Europe	France	Japan
1	X	X	X	—	X
2	X	X	X	—	X
3	X	X	X	—	X
4	X	X	X	—	X
5	X	X	X	—	X
6	X	X	X	—	X
7	X	X	X	—	X
8	X	X	X	—	X
9	X	X	X	—	X
10	X	X	X	X	X
11	X	X	X	X	X
12	—	—	X	X	X
13	—	—	X	X	X
14	—	—	—	—	X

X = Yes

— = No

Regulatory Information

Federal Communication Commission Interference Statement

This equipment has been tested and found to comply with the limits for a Class B digital device, pursuant to Part 15 of the FCC Rules. These limits are designed to provide reasonable protection against harmful interference in a residential installation. This equipment generates, uses and can radiate radio frequency energy and, if not installed and used in accordance with the instructions, may cause harmful interference to radio communications. However, there is no guarantee that interference will not occur in a particular installation. If this equipment does cause harmful interference to radio or television reception, which can be determined by turning the equipment off and on, the user is encouraged to try to correct the interference by one of the following measures:

- Reorient or relocate the receiving antenna.
- Increase the separation between the equipment and receiver.
- Connect the equipment into an outlet on a circuit different from that to which the receiver is connected.
- Consult the dealer or an experienced radio/TV technician for help.

FCC Caution: To assure continued compliance, (example - use only shielded interface cables when connecting to computer or peripheral devices) any changes or modifications not expressly approved by the party responsible for compliance could void the user's authority to operate this equipment.

This device complies with Part 15 of the FCC Rules. Operation is subject to the following two conditions: (1) This device may not cause harmful interference, and (2) this device must accept any interference received, including interference that may cause undesired operation.

IMPORTANT NOTE:

FCC Radiation Exposure Statement:

This equipment complies with FCC radiation exposure limits set forth for an uncontrolled environment. This equipment should be installed and operated with minimum distance 20cm between the radiator & your body.

This transmitter must not be co-located or operating in conjunction with any other antenna or transmitter.

Table of Contents

Regulatory Information	4
1. Welcome	6
1.1 Kit Contents.....	7
1.2 Main Features of WLAN USB Card.....	8
1.3 Wireless Networking Scenarios	9
1.4 Advantages for Using Wireless Network.....	11
2. Quick Start to Wireless Networking.....	12
3. Step-by-Step Installation Guide.....	19
3.1 Install the IEEE802.11b WLAN Driver / Utility	20
3.2 Install the USB Card	23
3.3 IEEE802.11b USB WLAN Utility	26
3.4 Basic Setting for Infrastructure Mode.....	27
3.5 Basic Setting for 802.11Ad Hoc Mode/Ad Hoc Mode	28
3.6 Advanced Settings.....	30
3.7 Encryption Function.....	31
3.8 Remove your USB Card.....	33
3.9 Uninstall the IEEE802.11b USB WLAN Utility / Driver.....	34
4. Using the Utility.....	35
4.1 LAN Status Tab.....	35
4.2 Link Information Tab	36
4.3 Site Survey	36
4.4 Diagnostic Tab.....	37
4.5 About.....	37
5. Network Application	38
5.1 Surveying the Network Neighborhood	38
5.2 File Sharing	39
5.3 Using the Shared Folder.....	40

1. Welcome

Thank you for purchasing our IEEE802.11b Wireless LAN USB Card, and welcome to Wireless LAN—the easy way to wireless networking.

This user guide introduces to you the IEEE802.11b Wireless LAN USB Card and describes the most common configurations, which will help you connect to your network easily.

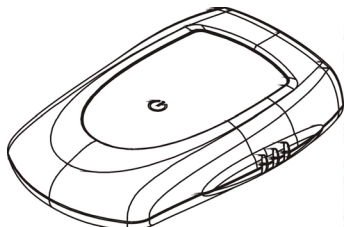
Please read this manual to get familiar with the IEEE802.11b Wireless LAN. This manual contains detailed instructions in operation of this product. Please keep this manual for future reference.

As this product is designed to run under Microsoft Windows, it is recommended that to be installed by people who are familiar with the installation procedures for network operating systems under Microsoft Windows.

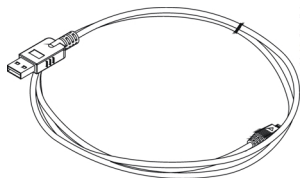
1.1 Kit Contents

The IEEE802.11b USB Wireless LAN kit should include the following items: 1 USB Card, 1 USB Cable, 1 CD, Quick Start Guide and User's Guide.

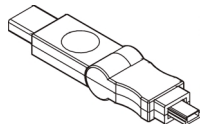
- a. 1 USB Card



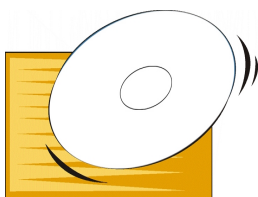
- b. 1 USB Cable



- c. Adapter (Optional)



- d. 1CD including:



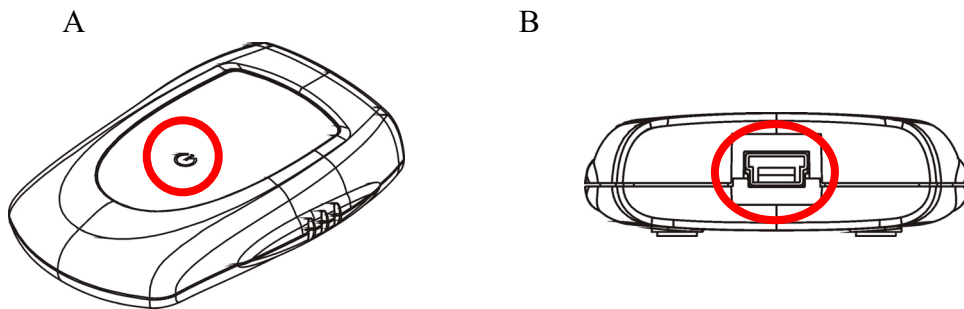
1. IEEE802.11b USB WLAN Utility & Driver software
2. Acrobat Reader
3. User Manual PDF file

- e. Quick Start Guide

- f. User's Guide (this document)

If any of the items mentioned above are damaged or missing, please contact your distributor.

1.2 Main Features of WLAN USB Card



A. Status LED

- Off: No wireless activity
- Blinking: Searching for the Access Point (disconnected)
- Steady Red: Connected to Access Point, or, being in 802.11 Ad Hoc mode (either connected or disconnected).

B. USB Connector

USB WLAN Adapter features:

1. High-speed wireless connection, up to 11 Mbps
2. IEEE802.11b (DSSS) standard for 2.4 GHz Wireless LAN
3. Plug-and-Play installation
4. Solid design with an integrated antenna
5. Full mobility and seamless cell-to-cell roaming
6. Automatic scale back at per packet level

USB WLAN Adapter supports:

1. Automatic load balancing for optimized bandwidth
2. Advanced power management
3. Windows98SE, ME, 2000, XP, XP 2nd edition (subject to availability) and Windows CE (subject to availability).

1.3 Wireless Networking Scenarios

As our IEEE802.11b Wireless LAN USB Card is interoperable and compatible with other IEEE 802.11b compliant products from other manufacturers, it offers you the most freedom to establish your ideal wireless network. Therefore, after installing IEEE802.11b USB Wireless LAN, you can connect your computer to:

- a. A Peer-to-Peer Workgroup of IEEE802.11b compliant wireless devices.
- b. A LAN (Local Area Network) constructed by Access Point(s) or other IEEE802.11b compliant systems.
- c. Share your Internet access by using just one connection, share printers and other peripheral devices, share data and image files between networked PCs, play multi-player games, and use other network enabled sharing resources.

A. Peer-to-Peer Networking:

An Ad Hoc Network could be easily set up with some PCs and this IEEE802.11b WLAN USB Card or our other WLAN devices. Therefore, it is very suitable to build a network for temporary use, such as for demonstration in exhibition, for new sales point/branch use and alike.

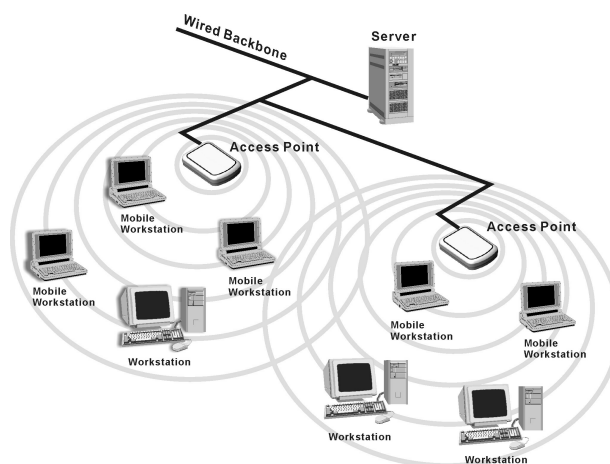


B. Cooperate LAN (Local Area Networking):

With some IEEE802.11b USB WLAN Adapters and Access Points, it is easy to construct a LAN with access to Internet for enterprise use.

The construction is quite easy that the USB Card and Access Point will automatically work at the most suitable frequency when Access Point is set within the proper range.

In addition, commonly manufacturers will bundle the Site-Survey tool for users to check the communication quality.



1.4 Advantages for Using Wireless Network

IEEE802.11b WLAN USB Card can wirelessly transmit and receive data, minimizing the need for wired connections, at a speed of up to eleven megabit per second. With the IEEE802.11b WLAN USB Card you can locate your PC wherever you want without wires and cables.

The IEEE802.11b WLAN USB Card provides LAN users with an access to real-time information anywhere in their organization. The mobility provides effectiveness and efficiency, which are not available under wired networks.

The IEEE802.11b WLAN USB Card configuration is easy to switch between peer-to-peer networks, suitable for a small number of users, and full infrastructure networks of thousands of users that allow roaming around a broad area.

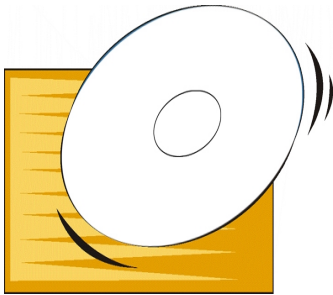
Therefore, you may see many advantages for adopting Wireless Networking as follows:

- *Less Space Limits:* The USB Card provides access to network services without wires; therefore, it gives you more freedom to allocate and style your living and working space. In addition, in some areas where is hard or expensive to connect to wired networks, such as historic buildings, classrooms or mobile connectivity, then you can count on wireless networking.
- *Flexible Workgroups and Lower Cost:* For workspaces that are frequently reconfigured for temporarily use such as demo in exhibitions, wireless networking is easy to set up of lower total cost—and all equipments are recyclable. You do not have to remove the old wires and then build up the new ones again and again.
- *Networked Conference Rooms:* Users can access the network as they move from a meeting to another, getting the access to information/data and the ability to communicate decisions while “on the go”.
- *Ad Hoc Networking:* On site consulting and small workgroups may increase productivity with quick network setup and collaboration software.
- *Branch office Networking:* With an Access Point to bridge between the LAN and Internet, wireless networking provides an easy to install, use and maintain network for a remote or sales office.
- *Campus-Wide Network Mobility:* The roaming capabilities allow enterprise to set up easy to use wireless networks that cover the entire campus transparently.

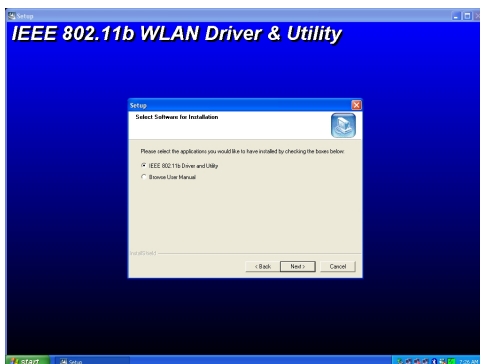
2. Quick Start to Wireless Networking

(Windows XP)

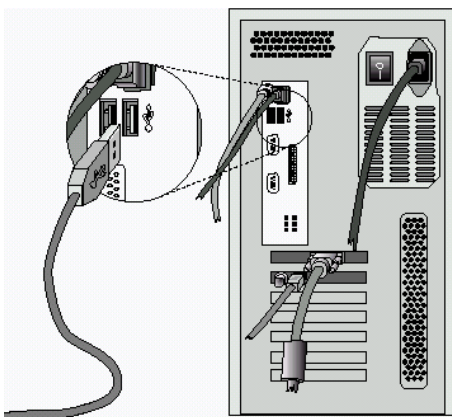
1. **Insert the installation CD.** It automatically starts the setup program for WLAN Utility and Driver.



2. **Follow the installation wizard** to complete the software installation process.



3. **Insert the USB card.**



4. When the USB card is detected, “Found New Hardware Wizard” window pops up. Select “Install the software automatically”, click “Next” and go on to step 6. To save the searching time, you may select “Install from a list or specific location”, click “Next” and go on to step 5 to assign a designated location for searching.



5. Enter the designated location for driver searching. Click “Next”.



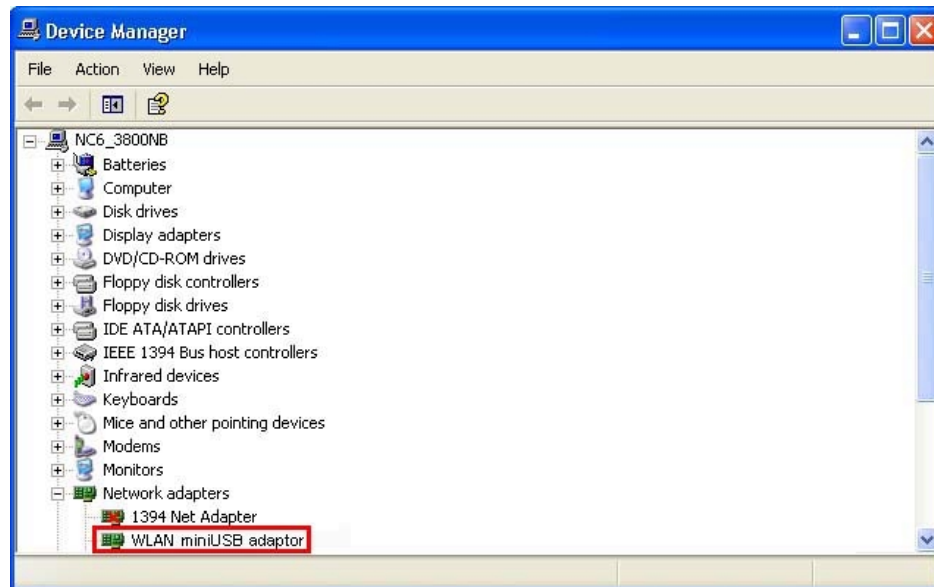
6. Click “Finish”.



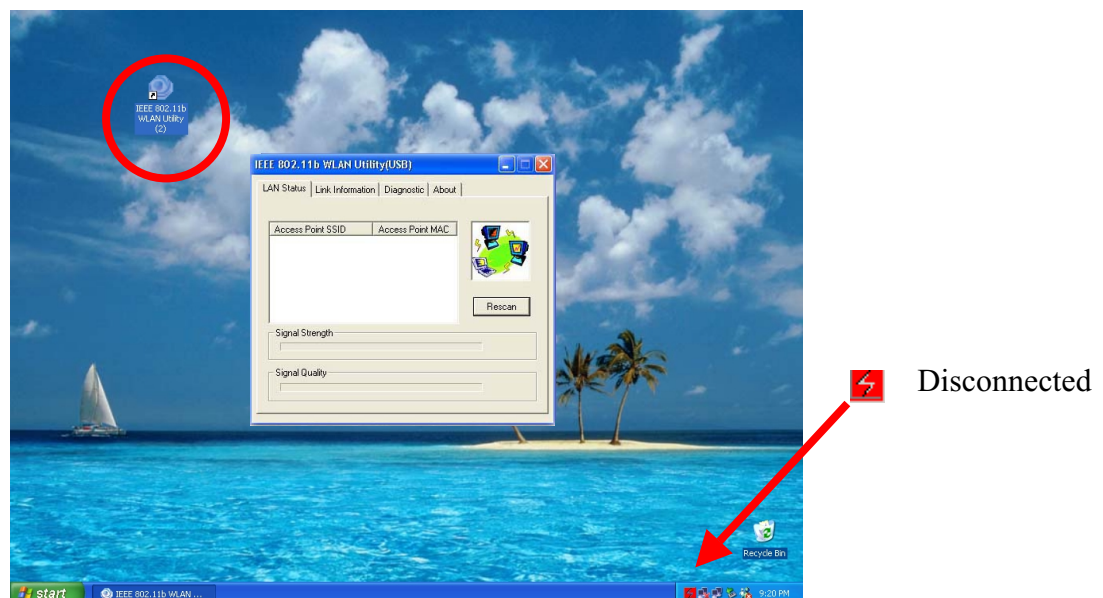
7. A dialog box pops up informing you that the USB card is ready to be used.



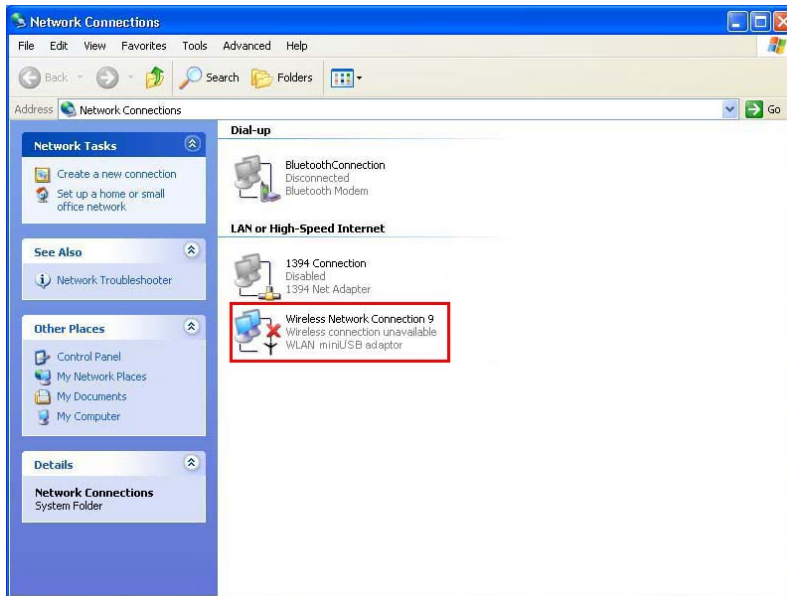
8. Operation System will detect new device and prompt the driver automatically. You may check it through Start>Settings>Control Panel > System > Hardware >Device Manager.



9. **Double click the shortcut icon.** The IEEE 802.11b WLAN Utility window appears. You can also see a small red icon in Windows System Tray.





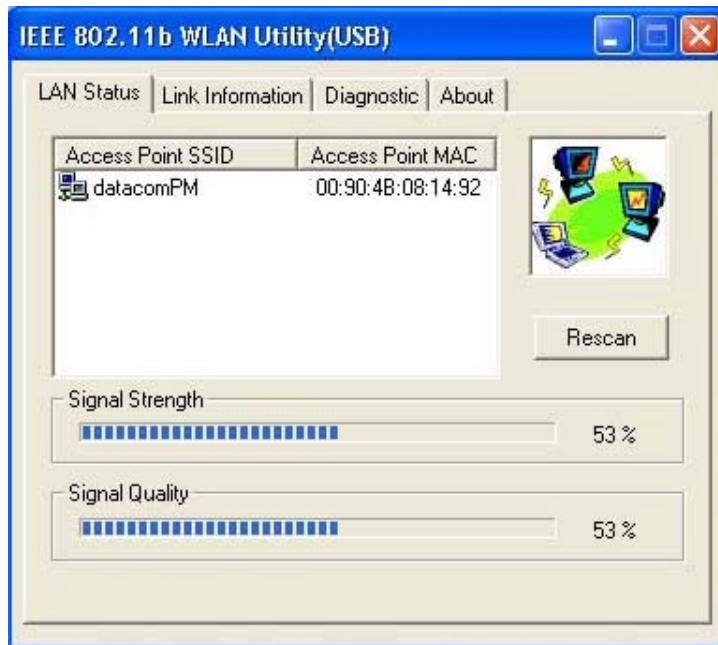
10. Double click the Windows XP “Wireless Network Connection” icon in Windows System Tray. Or click **“Start>Settings>Network Connections”**, and double click the Wireless Network Connection of W LAN miniUSB adaptor.




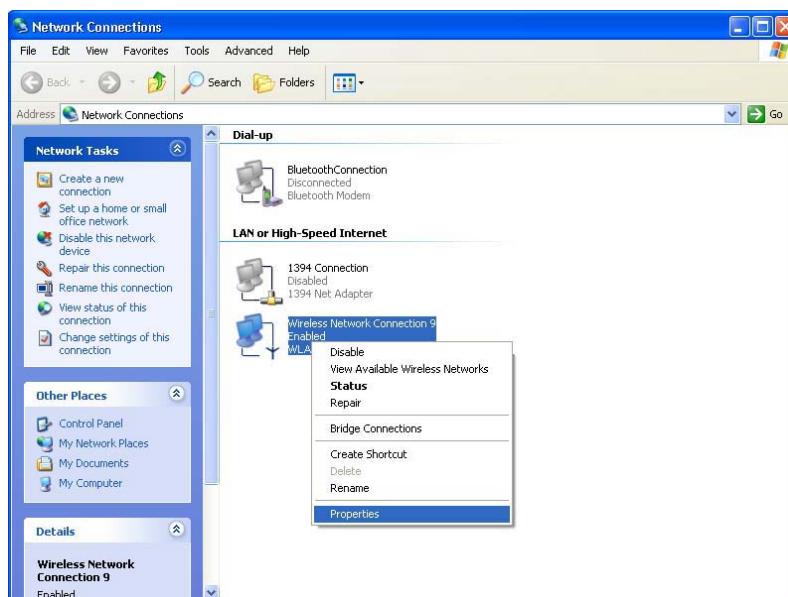
11. From the available networks list, **choose one network** and **enter the network key** (if necessary). Click **“Connect”**.



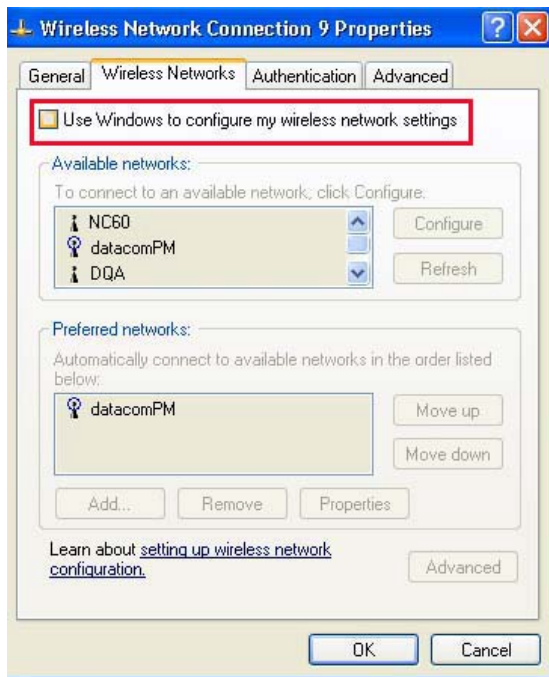
12. The IEEE802.11b WLAN Utility window shows you the signal strength and the quality. The small status icon in Windows System Tray may change its color. Green icon  indicates the presence of a strong connection. Yellow icon  indicates the presence of a low-quality connection.



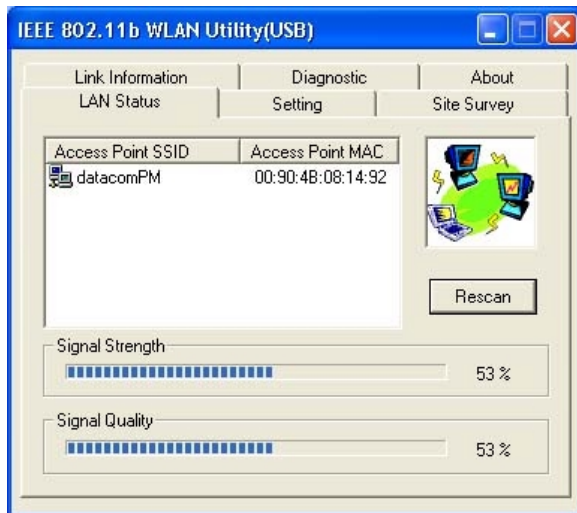
13. Double click the Windows XP “Wireless Network Connection” icon  in Windows System Tray. Or click **“Start>Settings>Network Connections”**, and right click the Wireless Network Connection of WLAN miniUSB adaptor. Choose Properties.



14. Select “Wireless Networks” tab. Clear the check box of “Use Windows to configure my wireless network settings”. Click “OK”.



15. The IEEE802.11b WLAN Utility window displays 2 more tabs. Choose each tab to view or edit the settings. For details, please read the users manual.



16. Now you may open your browser to access the Internet. Freely without wires



3. Step-by-Step Installation Guide

(Windows XP)

This section will lead you through the installation of USB Card and IEEE802.11b USB WLAN software in details. People who are familiar with the installation and settings of wireless device may refer to quick start guide to establish a network in a snap.

To establish your wireless network connection, the following steps should be executed:

1. Install the software by using the installation CD.
2. Install the USB Wireless LAN Adapter.
3. Install the required network protocols to communicate with your network.

Mostly, you will need to set the TCP / IP protocol.

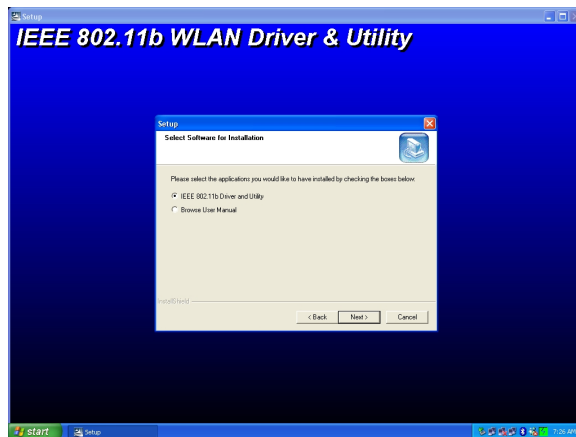
The product is designed to operate under Windows 98SE, ME, 2000, XP, XP 2nd edition (subject to availability) and Windows CE (subject to availability). The installation procedure is about the same. Please follow up the installation wizard that provided by your system to install the software. The following example is based on Windows XP.

3.1 Install the IEEE802.11b WLAN Driver / Utility

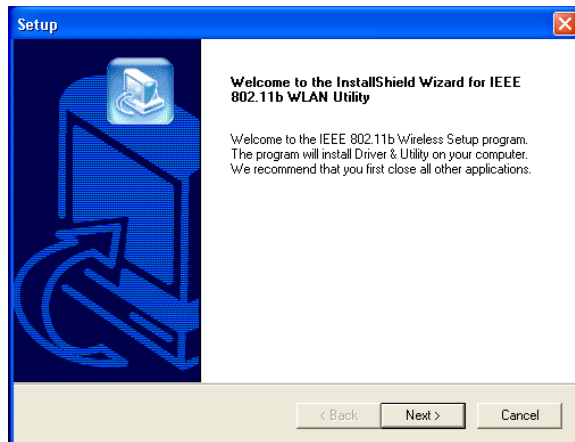


NOTE: Please install the IEEE802.11b WLAN Driver & Utility before inserting the IEEE802.11b Wireless LAN USB Card.

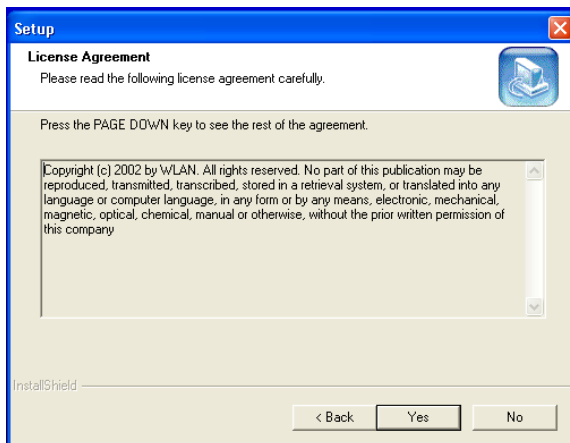
1. **Insert the installation CD.** Insert the installation CD into your CD-ROM drive. The setup program automatically starts.
2. **Click “Next”.** Select “Install IEEE802.11b WLAN Driver and Utility” and then click “Next” to go on the installation.



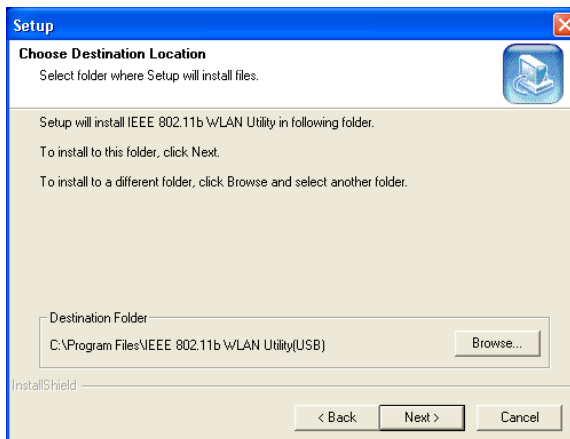
3. **Click “Next”.**



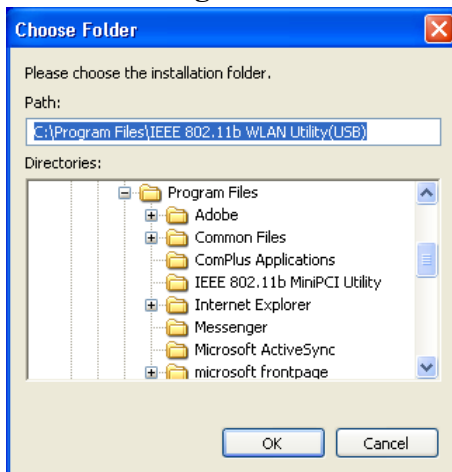
4. Click “Yes”.



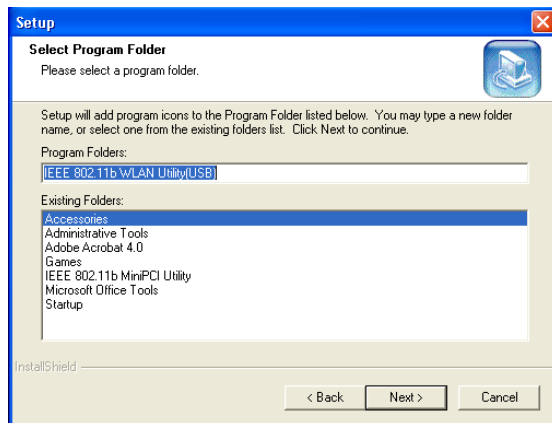
5. **Read the destination folder and click “Next”.** The default destination folder is displayed in the setup dialog box. Click “Next” to go on to Step 7. You may change the default folder by clicking “Browse“ to select the destination folder you prefer (go on to Step 6). Click “ Next” to go to the next screen.



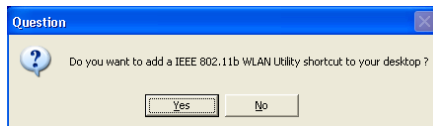
6. Select the Program Folder and click “Next”.



7. Click “Next”.



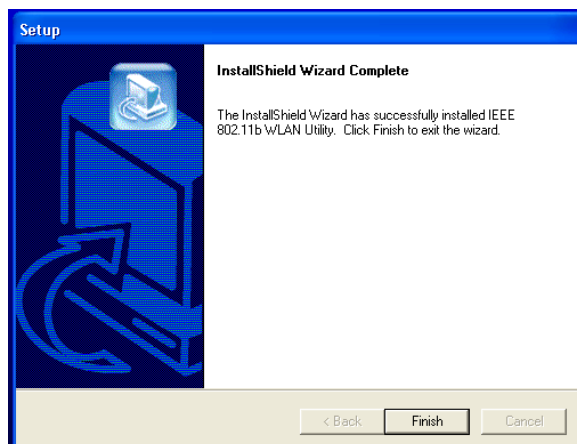
8. Click “Yes”. You are asked whether to add an IEEE802.11b USB WLAN Utility shortcut to your desktop. Click “Yes” to create one.



9. The user manual is published in Portable Document Format (PDF). If Acrobat Reader does not exist in your system, the following message will be prompted to automatically enter the Acrobat Reader installation screen. Please follow the instructions to complete the Acrobat Reader installation.




10. Click “Finish”. The installation is complete.

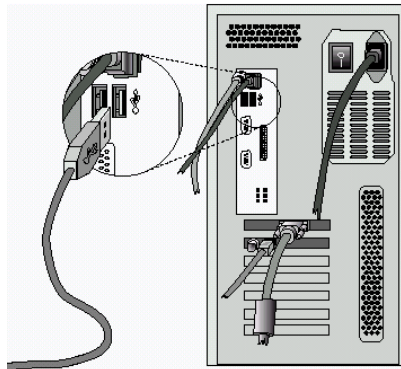


11. For the installation of IEEE802.11b Wireless LAN USB Card, please refer to the next chapter 3.2 “Install the USB Card.”

3.2 Install the USB Card (Windows XP)

 **NOTE:** The IEEE802.11b WLAN driver and utility are included in the accompanying installation CD. Please follow the installation procedures in Section 3.1. (Your USB Card will not work properly if the driver and utilities are not installed correctly.)

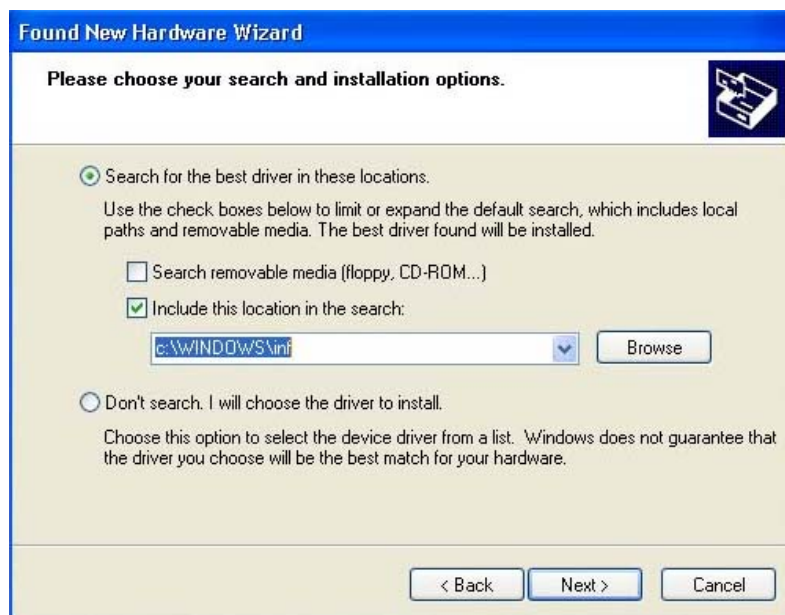
1. After software installation, connect the USB Card to your PC/notebook with the USB cable.



2. When the USB card is detected, “Found New Hardware Wizard” window pops up. Select “Install the software automatically”, click “Next” and go on to step 6. To save the searching time, you may select “Install from a list or specific location”, click “Next” and go on to step 5 to assign a designated location for searching.



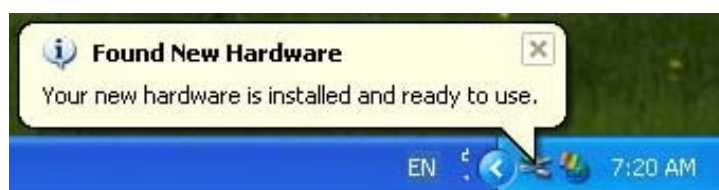
3. Enter the designated location for driver searching. Click “Next”.



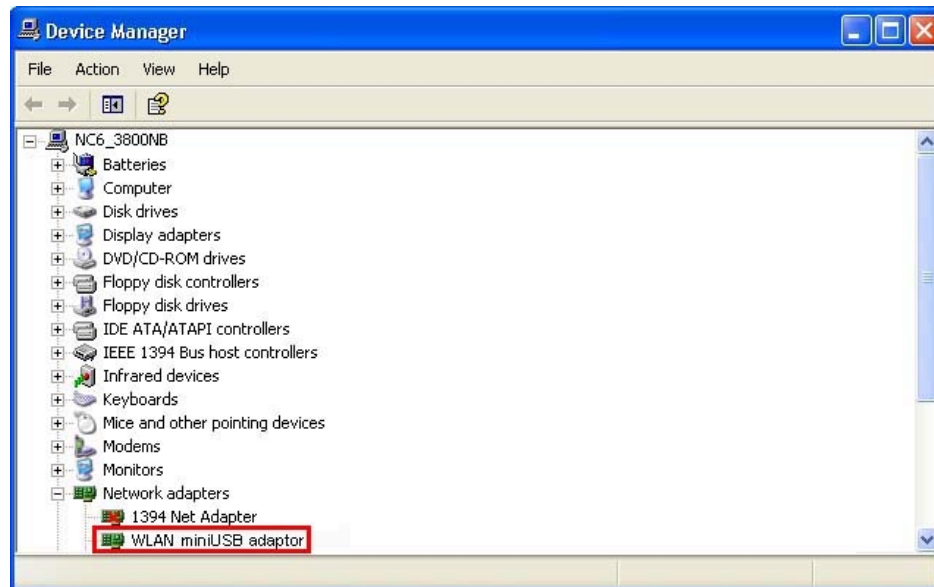
4. Click “Finish”.



5. A dialog box pops up informing you that the USB card is ready to be used.




6. Operation System will detect new device and prompt the driver automatically.
You may check it through Start>Settings>Control Panel > System > Hardware >Device Manager.






Note: To start the utility, please refer to the chapter 3.3 “IEEE802.11b USB WLAN Utility”.



3.3 IEEE802.11b USB WLAN Utility

IEEE802.11b USB WLAN Adapter has its own management software, named IEEE802.11b USB WLAN Utility, and users can control all functions provided with it. The Utility icon  appears in the Windows System Tray after clicking the IEEE802.11b USB WLAN Utility shortcut on your desktop. The Utility includes six tabs: LAN Status, Setting, Site Survey, Link Information, Diagnostic and About.

The definition of the color of the Utility icon is as follows:

-  Connected (Green)
-  Low quality (Yellow)
-  Disconnected (Red)

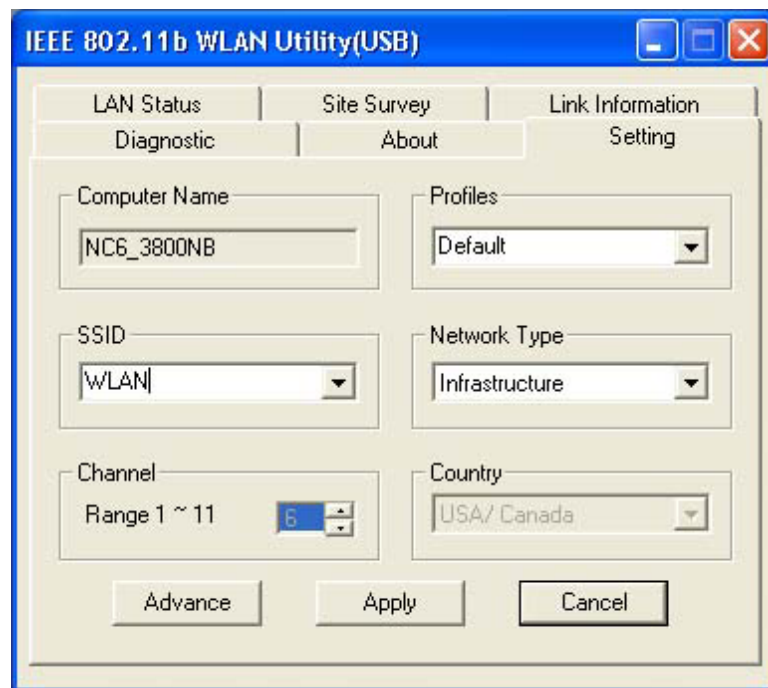
In Ad Hoc mode, in one workgroup, the Channel and SSID of each station must be the same—therefore they can communicate with each other within the local LAN properly. Moreover, all connected computers should have the same net ID and subnet ID.

-  To open IEEE802.11b Utility, please double click the status icon in the Windows System Tray.
-  To open IEEE802.11b Utility under Windows XP, please refer to chapter 2 “Quick Start to Wireless Networking”, step 9~step 15.

3.4 Basic Setting for Infrastructure Mode

To connect with an Access Point, please follow the process below:

1. Select the “Setting” tab
 2. Select “Infrastructure” for Network Type
 3. Select or enter the correct SSID
 4. Press the “Apply” button.
- ◆ **SSID** is the group name that will be shared by every member of your wireless network. You will only be able to connect with an Access Point (AP), which has the same SSID. Note that the SSID will be case sensitivity.
 - ◆ **Channel** is not active in Infrastructure Mode.



3.5 Basic Setting for 802.11Ad Hoc Mode/Ad Hoc Mode

If you have more computers and only want to place them in a local area network, or you want to communicate directly without using an Access Point or any connection to a wired network, then you can select the “802.11 Ad Hoc” mode or “Ad Hoc” mode on your WLAN Utility.

“802.11 Ad Hoc” is the official standard set by IEEE Organization whereas “Ad Hoc” is a pre-standard. Therefore we recommend you to select the “802.11 Ad Hoc” mode.

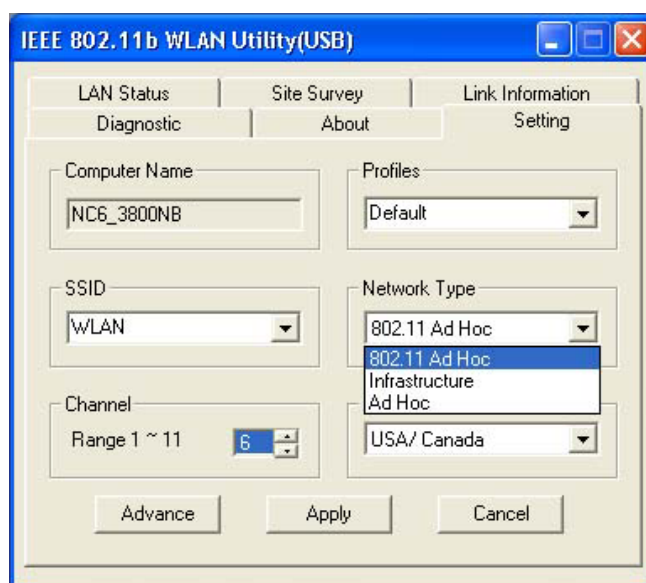
Please note that “802.11 Ad Hoc” mode and “Ad Hoc” mode are not compatible. If you select the “802.11 Ad Hoc” mode, then all computers of your workgroup should be set as the “802.11 Ad Hoc”—vice versa with the “Ad Hoc” mode.

A. 802.11 Ad Hoc

Please follow the procedures below to set the “802.11 Ad Hoc”:

1. Select “Setting” tab.
2. Select “802.11 Ad Hoc” for Network Type.
3. Type in the SSID, which you want to use in your 802.11 Wireless LAN.
4. Press the “Apply” button.

- ◆ Every member of your peer-to-peer network must set to the same SSID, which is case sensitive.





You must select a SSID if you use the 802.11 Ad hoc.

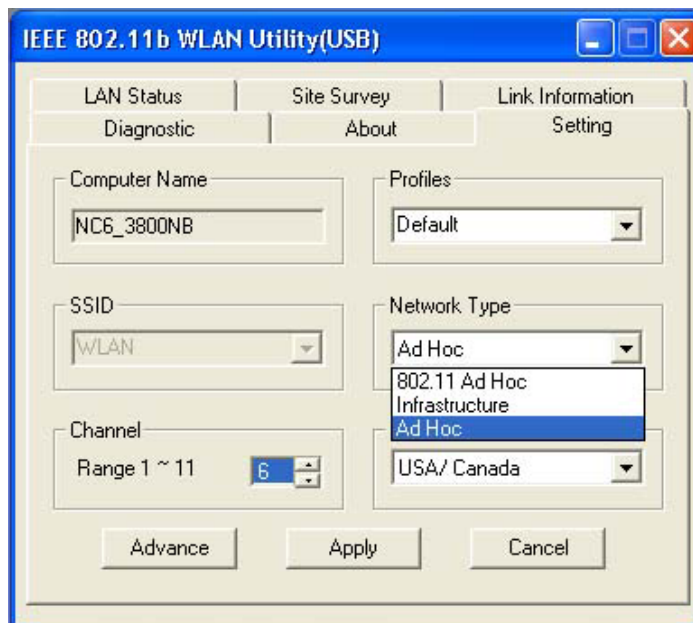


If you have trouble connecting other brands' IEEE 802.11b devices using the "802.11 Ad Hoc" mode, please try "Ad Hoc" mode. The next section shows you the basic setting of the "Ad Hoc" mode.

B. Ad Hoc Mode

Please follow the procedures below to set the "Ad Hoc" Mode:

1. Select the "Setting" tab.
2. Select "Ad Hoc" for Network Type.
3. Select the correct channel. (The channel of all computers in one workgroup must be the same.)
4. Press the "Apply" button.



Channel shows radio channel numbers used for networking. Channel number must be the same between stations so computers can communicate in the same local LAN. It can be changed only under the Ad Hoc Mode. Please refer to the following table.

Country	Channel Range
USA/Canada	11 (1~11)
Most of Europe/Australia	13 (1~13)
France	4 (10~13)
Japan	13 (1~13) or 14 th

3.6 Advanced Settings

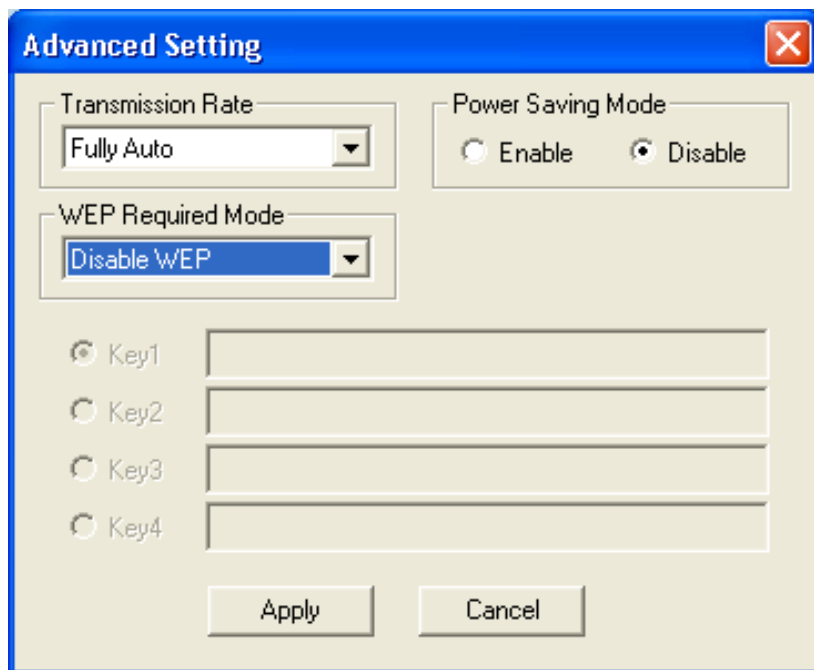
Click the “Advance” button in the Setting page and then the following advanced settings for your IEEE802.11b Wireless LAN USB Card.

Regarding the transmission rate, there are four options:

- A. Fully Auto (Default)
- B. Fixed 11Mbps
- C. Fixed 5.5Mbps
- D. Auto 1 or 2 Mbps

You may select and change transmission rate by clicking the pull-down button.

If you enable the “Power Saving” mode, the USB Card can work with low power consumption but the throughput may slow down.



The image shows a Windows-style dialog box titled "Advanced Setting" with a blue title bar and a red close button. The dialog contains several configuration options:

- Transmission Rate:** A pull-down menu currently showing "Fully Auto".
- Power Saving Mode:** Two radio buttons, "Enable" and "Disable". The "Disable" button is selected.
- WEP Required Mode:** A pull-down menu currently showing "Disable WEP".
- WEP Keys:** Four radio buttons labeled "Key1", "Key2", "Key3", and "Key4". "Key1" is selected. To the right of each radio button is a text input field for the key value.
- Buttons:** "Apply" and "Cancel" buttons at the bottom.

3.7 Encryption Function

You may enhance the security of your network by enabling the “Encryption” function. The WEP Required Mode enables you to define the encryption keys that your IEEE802.11b Wireless LAN USB Card should use.

Caution:

If you wish to enable the “Encryption” function, you must enable this function for all computers of your network, and the WEP key needs to be the same for all IEEE802.11b stations.

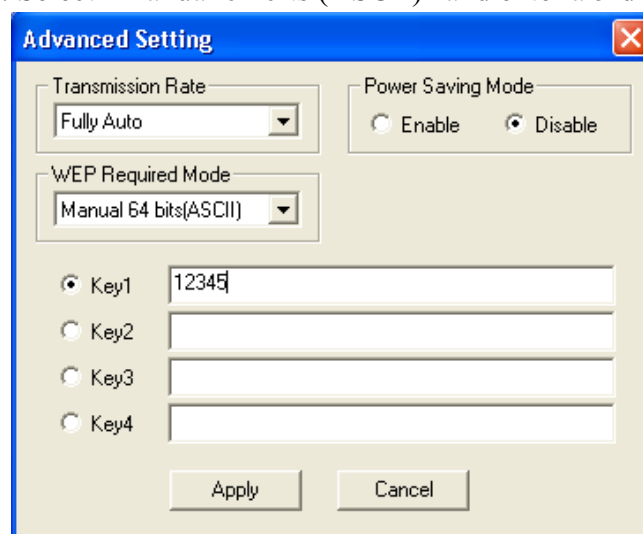
Follow the steps below to set your WEP Required Mode:

(1) Select one mode from the drop down menu of WEP required Mode and set the WEP key. Four modes are available:

- A. Manual 64 bits (ASCII)
- B. Manual 128 bits (ASCII)
- C. Manual 64 bits
- D. Manual 128 bits

(2) Press “Apply” button when finish the WEP setting.

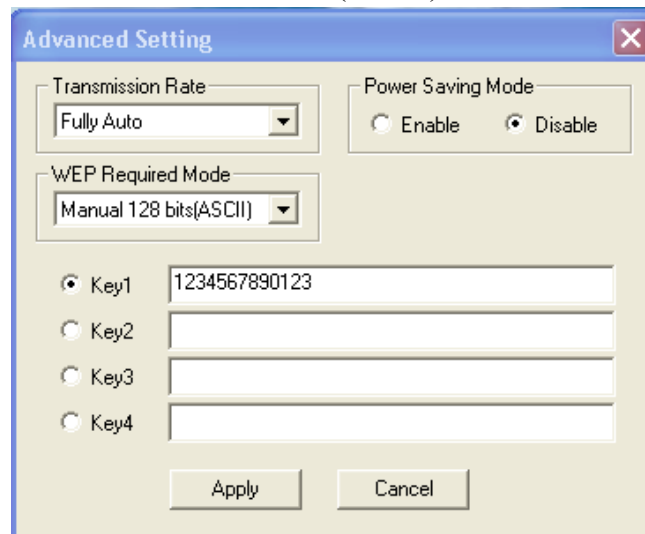
a. Select “Manual 64 bits (ASCII)” and enter a 5-digit WEP Key.



The screenshot shows a window titled "Advanced Setting" with a blue title bar and a red close button. Inside the window, there are several settings:

- Transmission Rate:** A dropdown menu set to "Fully Auto".
- Power Saving Mode:** Two radio buttons, "Enable" and "Disable", with "Disable" selected.
- WEP Required Mode:** A dropdown menu set to "Manual 64 bits(ASCII)".
- WEP Keys:** Four radio buttons labeled "Key1", "Key2", "Key3", and "Key4". "Key1" is selected. To the right of each radio button is a text input field. The "Key1" field contains the text "12345". The other three fields are empty.
- Buttons:** At the bottom of the window are two buttons: "Apply" and "Cancel".

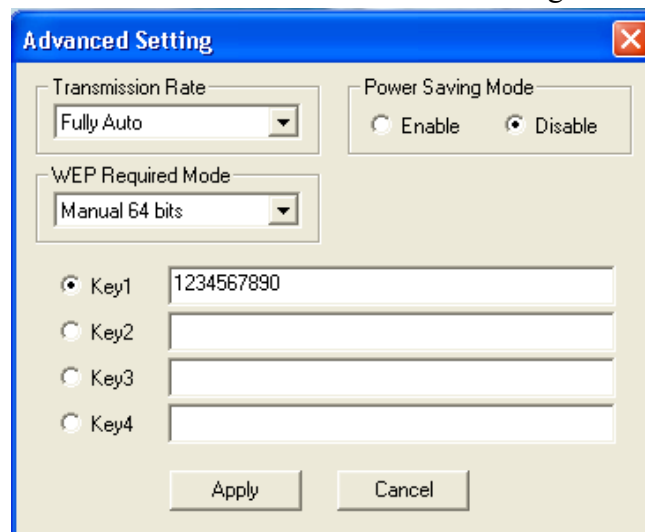
- b. Select “Manual 128 bits (ASCII)” and enter a 13-digit WEP Key.



The dialog box is titled "Advanced Setting" and contains the following elements:

- Transmission Rate:** A dropdown menu set to "Fully Auto".
- Power Saving Mode:** Two radio buttons, "Enable" and "Disable", with "Disable" selected.
- WEP Required Mode:** A dropdown menu set to "Manual 128 bits(ASCII)".
- Key Fields:** Four radio buttons labeled "Key1", "Key2", "Key3", and "Key4". "Key1" is selected, and its text field contains the 13-digit key "1234567890123". The other key fields are empty.
- Buttons:** "Apply" and "Cancel" buttons at the bottom.

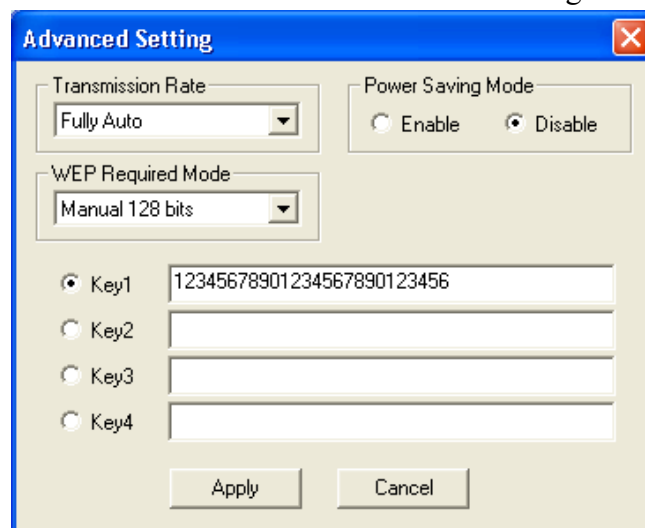
- c. Select “Manual 64 bits” and enter a 10-digit WEP Key.



The dialog box is titled "Advanced Setting" and contains the following elements:

- Transmission Rate:** A dropdown menu set to "Fully Auto".
- Power Saving Mode:** Two radio buttons, "Enable" and "Disable", with "Disable" selected.
- WEP Required Mode:** A dropdown menu set to "Manual 64 bits".
- Key Fields:** Four radio buttons labeled "Key1", "Key2", "Key3", and "Key4". "Key1" is selected, and its text field contains the 10-digit key "1234567890". The other key fields are empty.
- Buttons:** "Apply" and "Cancel" buttons at the bottom.

- d. Select “Manual 128 bits” and enter a 26-digit WEP Key.



The dialog box is titled "Advanced Setting" and contains the following elements:

- Transmission Rate:** A dropdown menu set to "Fully Auto".
- Power Saving Mode:** Two radio buttons, "Enable" and "Disable", with "Disable" selected.
- WEP Required Mode:** A dropdown menu set to "Manual 128 bits".
- Key Fields:** Four radio buttons labeled "Key1", "Key2", "Key3", and "Key4". "Key1" is selected, and its text field contains the 26-digit key "12345678901234567890123456". The other key fields are empty.
- Buttons:** "Apply" and "Cancel" buttons at the bottom.

3.8 Remove your USB Card

If you do not need the wireless connectivity of your IEEE802.11b USB WLAN Adapter, you can unplug and remove your USB Card directly.

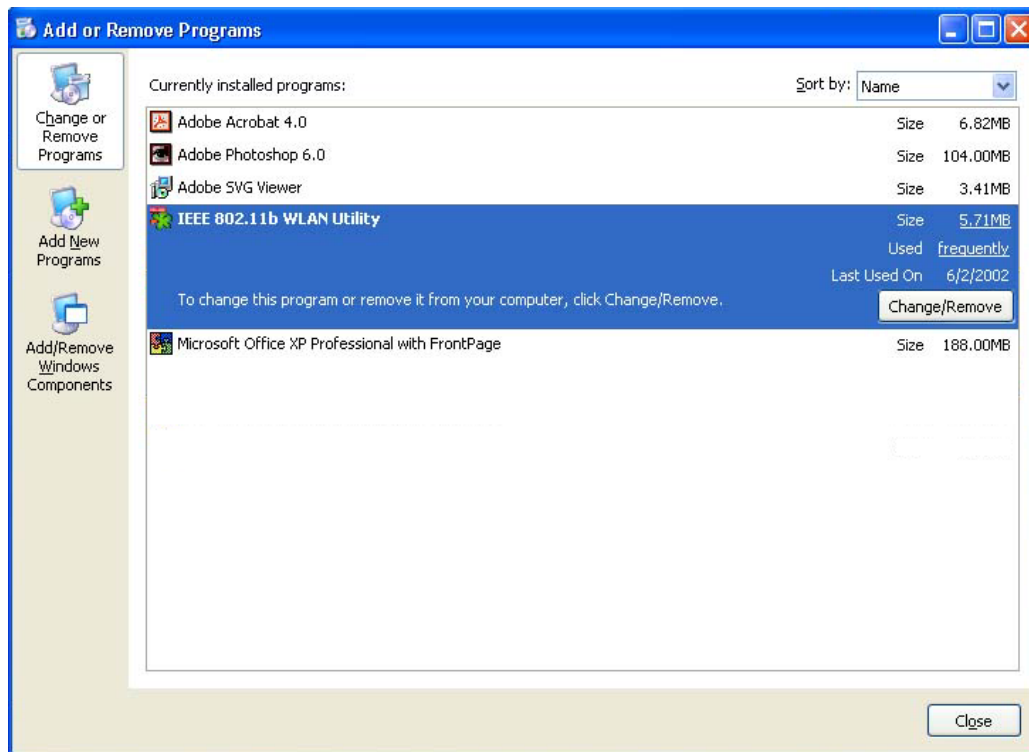
Note!

When removing the IEEE802.11b WLAN USB Card, you will lose your connection to the network. Make sure you have closed all files and network applications (such as e-mail) prior to removing the USB Card.

3.9 Uninstall the IEEE802.11b USB WLAN Utility / Driver

If you do not need the wireless connectivity of your IEEE802.11b USB WLAN Adapter...

1. **Disconnect and remove the IEEE802.11b USB WLAN Adapter.**
2. **Click Start > Settings > Control Panel > Add or Remove Programs > IEEE802.11bWLAN Utility > Change/Remove**



3. **Click “Yes”.** The dialog box pops up and ask you whether you are sure to uninstall the IEEE802.11b USB WLAN Utility and all of its components. Click “ Yes “ to run the un-installation or click “ No “ to exit.



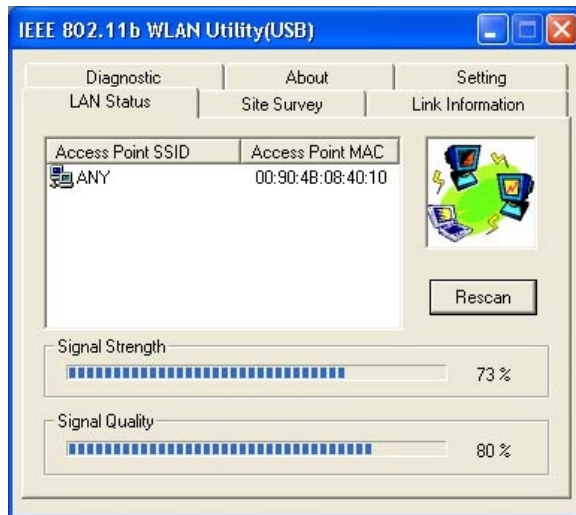
4. **Click “OK”.** Now the un-installation is completed.



4. Using the Utility

4.1 LAN Status Tab

If you want to know the connecting status in Infrastructure Mode or 802.11 Ad Hoc Mode, choose LAN Status tab in IEEE802.11b WLAN Utility window.



1. Infrastructure Mode:

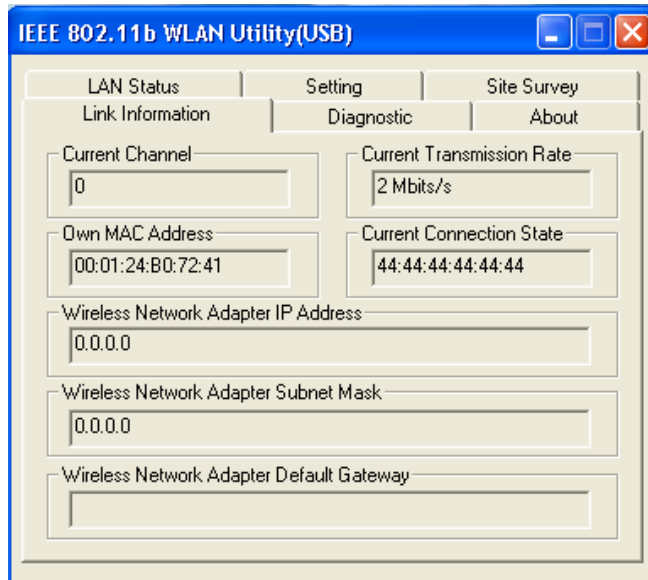
- The SSID and MAC of the access Point, which your computer connects to, will appear in the screen if you choose the Infrastructure Mode.
- Double click the Access Point SSID (under the Infrastructure Mode) to access to the Microsoft Network Neighborhood folder to find other on-line computers.
- You can see the status of the Link Quality and Signal Strength under the LAN status page.

2. 802.11 Ad Hoc Mode / Ad Hoc Mode:

- The station Name and MAC address of your station will appear if you choose the 802.11 Ad Hoc Mode (or Ad Hoc Mode).
- Double click the right name to display the content of your computer or double click Network Neighbors to access to the Microsoft Network Neighborhood folder to find other on-line computers.
- Click "Rescan" to find current available computers in the network.

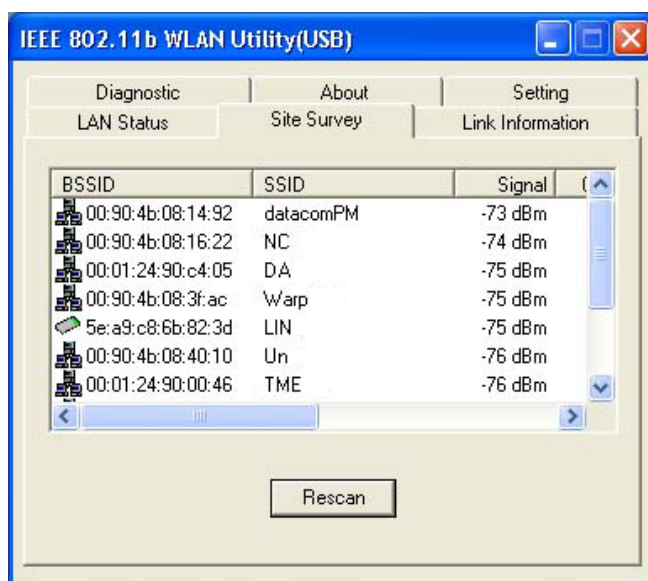
4.2 Link Information Tab

The Link Information tab shows information of Current Channel, Current Transmission Rate, Own MAC Address, Current Connection State, Wireless Network Adapter IP Address, Wireless Network Adapter Subnet Mask, and Wireless Network Adapter Default Gateway.



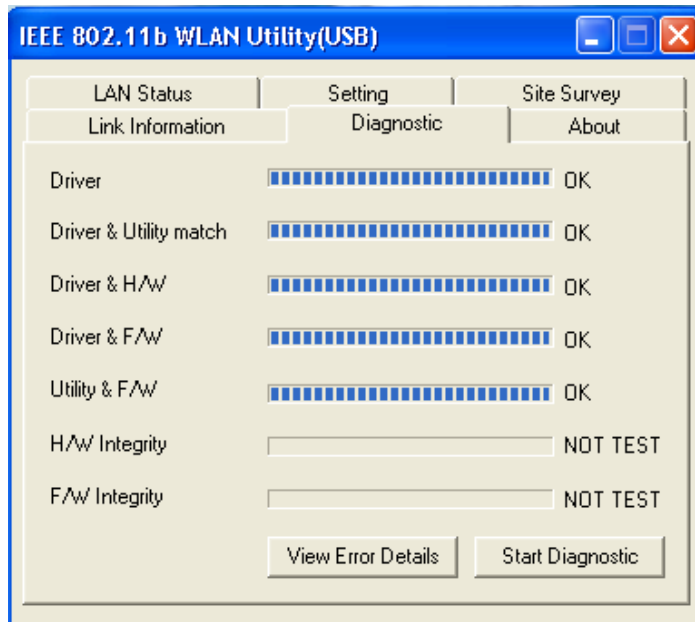
4.3 Site Survey

This tab gives you all the information of each Access Point within the communication range, so that you can select the Access Point with the strongest signal for better performance.



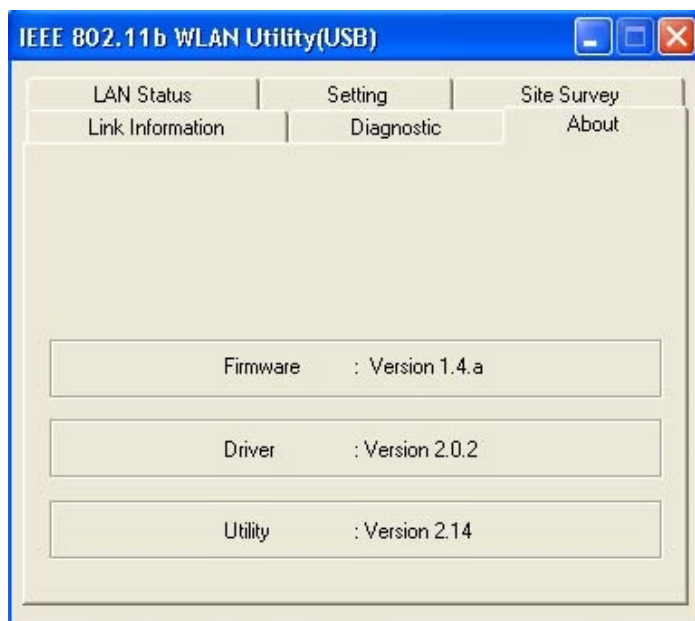
4.4 Diagnostic Tab

Click “Start Diagnostic” button to check errors in hardware, firmware, and software of your USB Card. In case of any errors occur, please click “View Error details” button and print it out to present to your dealer or distributor.



4.5 About

This tab provides you the version information of Firmware, Driver and Utility.



5. Network Application

This section consists of the network applications of IEEE802.11b WLAN USB Card, including:

- To Survey the network neighborhood
- To Share Your Folder with Your Network Member(s)
- To Share Your Printer with Your Network Member(s)
- To Access the Shared Folder(s)/File(s) of Your Network Members(s)
- To Use the Shared Printer(s) of Your Network Member(s)

In fact, the network applications of IEEE802.11b WLAN USB Card are the same as they are in a wired network environment. You may refer to the following 3 examples of Surveying the Network Neighborhood, File Sharing and Using the Shared Folder.

5.1 Surveying the Network Neighborhood

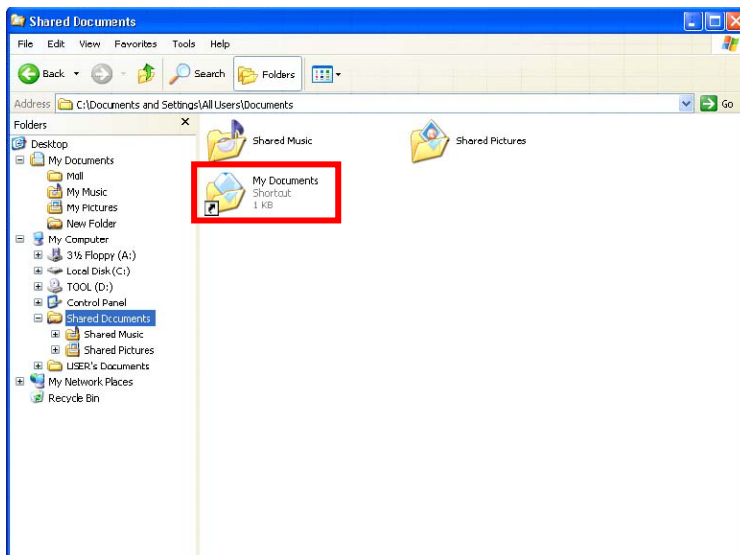
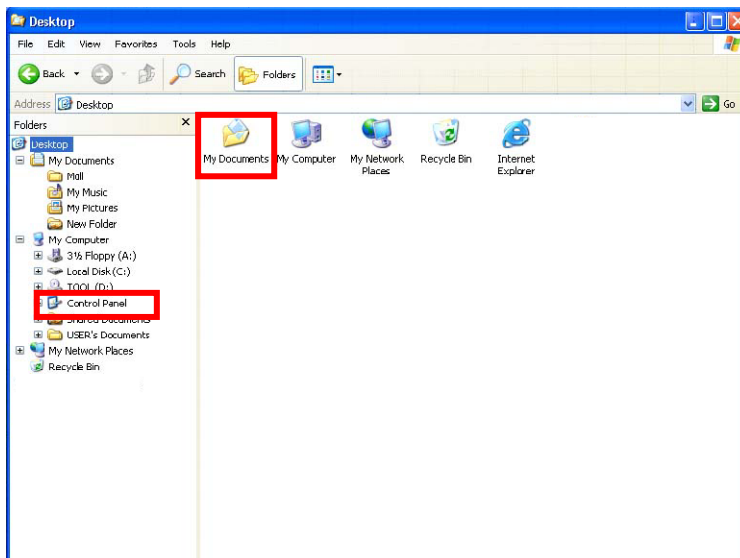
When multiple base stations are up and running in your wireless network, you can use the procedure described below to display the other computers:

1. **Double-click My Network Places** to display all stations in your Microsoft Windows Network Group.
2. To display other workgroups in the network environment, **double-click Entire Network**.
3. If there is a **second network operating system** running in your network environment (for example a Novell NetWare network), the “Entire Network” window will also display available servers running under the second network operating system. If you click on these servers, you may be asked to **enter your user name and password** that applies to the other network operating system. If you cannot find it, verify whether the other wireless computers are:
 - Powered up and logged on to the network.
 - Configured to operate with identical Microsoft Network settings concerning:
 - Networking Protocol.
 - Wireless Network Name.

To enable the sharing of **Internet access**, you should set your IEEE802.11b WLAN USB mode as “**Infrastructure**” and connect to the access point.

5.2 File Sharing

IEEE802.11b WLAN USB Card allows the sharing of files between computers that are logged onto the same wireless network. If you want to share your folder “My Documents” with other computers of the wireless network, please **highlight the folder “My Documents”** and drag it to **Shared Documents** folder.



Sharing files in the IEEE802.11b wireless network will be like sharing files on a wired LAN.

5.3 Using the Shared Folder

If you would like to access a shared folder stored in other stations of same network, please follow the process below:

1. Double-click the “My Network Places” icon, and then double-click the computer where the shared folder is located.
2. Double-click the folder you want to connect to.
3. Now you may open the needed file(s).

Note: If a password is required, the Windows will prompt a password column to you. Then you need to enter the password that had been assigned to this shared folder.