

Telematics



# SNM50

## V34+ (33.6) professional modem

**SNM50** modem and its card version **SNM54** for RMC2x Switched HUB, are high performing telematic solutions for data transmission in all professional applications; they have been projected to suit with any information system, from Personal Computers to MacIntosh systems, to Local Network Servers or Unix or Mainframe and allow communications up to **33.600 bps** on any switched or 2 and 4 wires leased line, both for local and long distance lines.

Thanks to the supported modulation standards SNM50 is a real **multistandard**, which is able to communicate with any other modems in conformity with ITU-T regulations; it works in full/half duplex with V13 support and also in digital multipoint applications.

It's perfect for all synchronous and asynchronous applications, client side or server side; SNM50 has got **special features** that allow to solve applicative problems other modems can hardly work out:

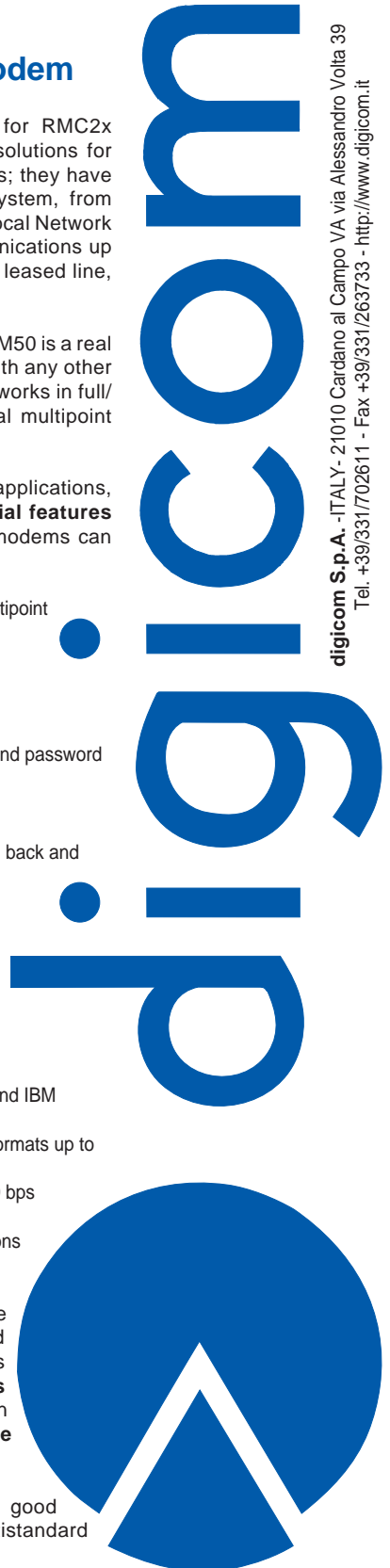
- automatic back-up and restore of point to point and multipoint leased connections
- back-up management on modems pull
- clock/calendar
- programmable agenda
- internal telephone book
- security management with programmable procedures and password
- dial-in/dial-out management client and server side
- client and server side call back
- client and server side extended call back
- 100 items of telephone book associated to security, call back and special programmings
- 20 programmable configurations in memory
- character teleprogramming
- tele download of complete configuration
- management by digicom MSS01 for back-up-restore and dial-in/out applications
- V54 diagnostic
- flash eeprom for upgrade of new functions
- AT call compatible with extended command set
- V25bis HDLC call mode with ASCII codes (for AS400 and IBM Mainframe)
- asynchronous working from 300 to 33600 bps with all formats up to 11 bit
- synchronous working on all speeds from 1200 to 33600 bps
- auto-adapting line speed according to error rate
- main and command port for special dual DTE applications (through proper cable)



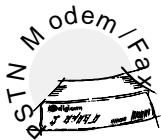
SNM50 is a modem growing according to the customer's needs; it is compatible with **SLIP** and **PPP** applications in Internet but also with access solutions to private networks with **Remote Access Server of Windows NT** or similar solutions in **Novell, Unix and IBM AS400 or Mainframe** environments.

The rack Switched HUB with SNM54 is a very good solution for **Internet Provider** thanks to its multistandard support up to 33600 bps.

In **5250(AS400)** or **3270(Mainframe)** synchronous environments, the product can support both switched applications and leased ones with back-up and management.

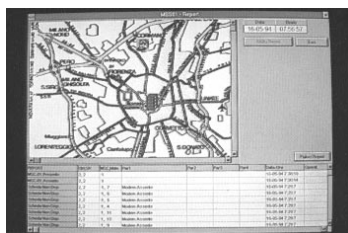
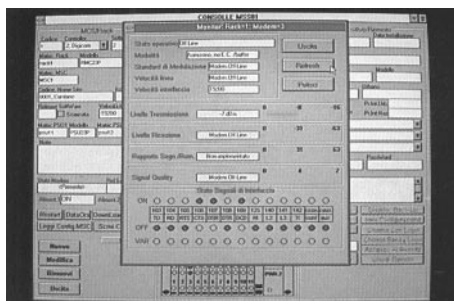
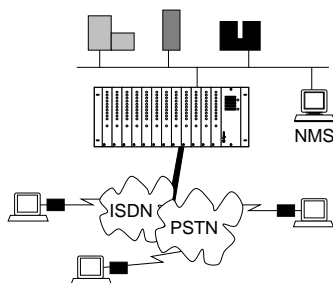


digicom S.p.A. - ITALY - 21010 Cardano al Campo VA via Alessandro Volta 39  
Tel. +39/0331/702611 - Fax +39/0331/263733 - <http://www.digicom.it>



## Technical Features

- V34+, V34, VFast, V32bis, V32, V22bis, V22, V23, V21
- 33600, 31200, 28800, 26400, 24000, 21600, 19200, 16800, 14400, 12000, 9600, 7200, 4800, 2400, 1200/75, 300 bps
- Full Duplex - Half Duplex (V13)
- Multistandard from DTE maximum speed or from autobaud
- Switched line
- 2 and 4 wires leased line
- Auto-adapting speed
- Error rate monitoring
- Automatic back-up and restore point to point and multipoint with monitor or loopback
- Back-up and restore without any session last
- Back-up management on modems pool
- Clock/Calendar
- Programmable agenda
- Internal telephone book
- Security management with programmable procedures and password
- Dial-in/dial-out management client and server side
- Client and server side call back
- Client and server side extended call back
- 100 items of telephone book associated to security, call back and special programmings
- 20 programmable configurations in memory
- Asynchronous up to 115200 bps
- Synchronous up to 33600 bps
- Internal, external and regenerated clock
- Asynchronous formats up to 11 bit
- Parity regeneration
- MNP5/V42-V42bis errors correction and data compression
- AT compatible
- HDLC synchronous-asynchronous V25bis with ASCII code
- DTMF and Pulse call
- Automatic answer
- V24/V28 - RS232C serial interface
- Main and command port (through proper cable)
- Character teleprogramming
- Tele download of complete configuration
- V54 diagnostic
- Flash eprom for upgrade of new functions
- Line impedance 600 ohm balanced
- TX level adjustable from -1 to -15 dBm
- RX level from 0 dBm to threshold level
- DCD threshold at -43 dBm - hysteresis more than 2 dBm
- Power supply 220 Vca - 50 Hz
- Maximum consumption equal to 5VA
- External version size: 190x150x44 mm
- Rack version SNM54 size: 1 slot x 4 units
- Weight: 2 Kg



PRODUCT	CODE	DESCRIPTION
SNM50	8D1821	33600/28800 V34+ PROFESSIONAL MODEM - EXTERNAL
SNM54	8D1831	33600/28800 V34+ PROFESSIONAL MODEM - RACK
RMC27	8D7069	12 CARDS RACK CONCENTRATOR WITH SINGLE POWER SUPPLY
RMC28	8D7070	10 CARDS RACK CONCENTRATOR WITH REDUNDANT POWER SUPPLY
PSU27	8D6058	POWER SUPPLY FOR RMC27-RMC28
CD03/1,5	8D4153	SERIAL CABLE FOR INFORMATION SYSTEMS
CD45/1	9D0505	UNIVERSAL CABLE FOR PCs